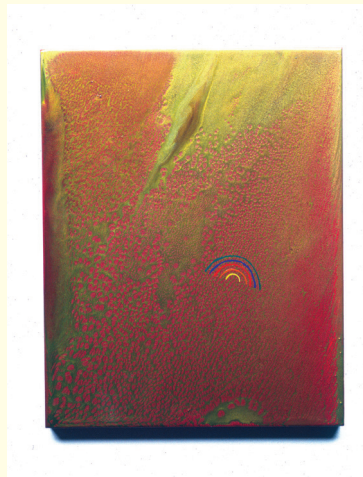


# Mitchell Kane\_Selected Works\_1980's:

---



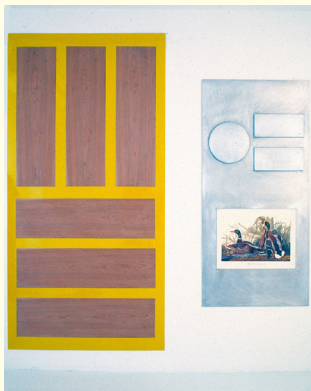
**"Mexico"**  
Oil, canvas  
6"x 8"  
1985



**"Five Bent Lines"**  
Enamel, Imron on panel  
8.5"x 11"  
1988



**"Fountain" w/detail**  
Audubon reproduction print,  
faucet, aluminum  
96"x 48"  
1987



**"Two-Piece Colonial"**  
Audubon reproduction print, cherry  
vaneer, aluminum, painted aluminum  
106"x 72"  
1987



**"Outrigger (St Louis World Fair 1904)" w/detail**  
Encapsulated photographs, beeswax on wood veneer on mahogany,  
aluminum, cotton, enamel  
96"x 72 x 16"  
1987



**"Warranty"**  
Screen ink, enamel, honeycomb panel,  
aluminized rubber  
1988



**"Seamless" w/detail**  
Encapsulated photographs, plastic bags, frame, glass  
84"x80"  
1988

